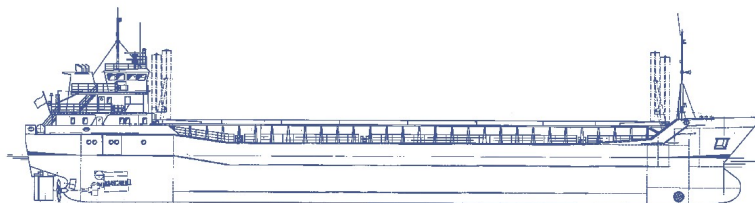


SHIPS PARTICULARS

MV EMSTAL



Callsign	CQEO3	Port of Registry	Madeira	Flag	Portugal
IMO number	9356878			MMSI	255 806 438

SHIP SPECIFICATION			
Type of vessel	General Dry Cargo Ship – multipurpose Single deck – single hold – steel floored Box shaped – one cargo hold Grain fitted – two moveable bulkheads		
Builder	Slovenske Lodenice A.S. 94525 Komarno, Slovakia Republic	Year of delivery	2007
Operating area	Europe, North Africa, Mediterranean	Service Speed	11.7 kn
Class. Society	DNV	P & I	HYDOR

TONNAGE/DRAFTS			
Gross tonnage	2461 mts	Summer draft	5,593 m
Net tonnage	1369 mts	Winter draft	5,476 m
Summer Deadweight	3793 (incl. bkhs) mts	Summer freeboard	1,52 m
Summer displacement	5022,8 mts	Keel to highest fixed point	24.2 m
DWCC Summer / Winter	abt. 3550 mts / abt 3420 mts	Air draft in full ballast condition	21,5 m

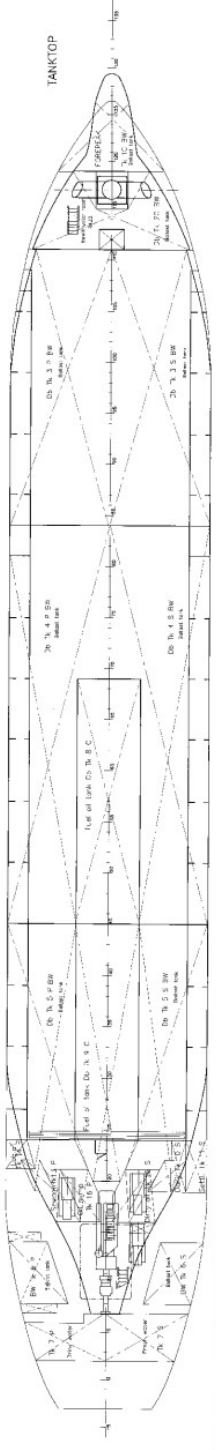
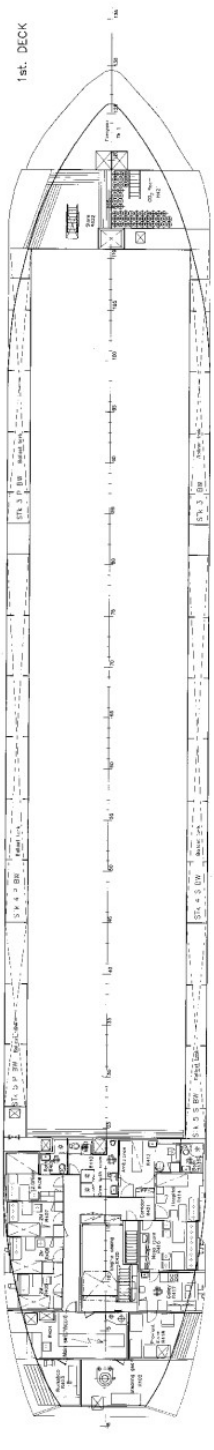
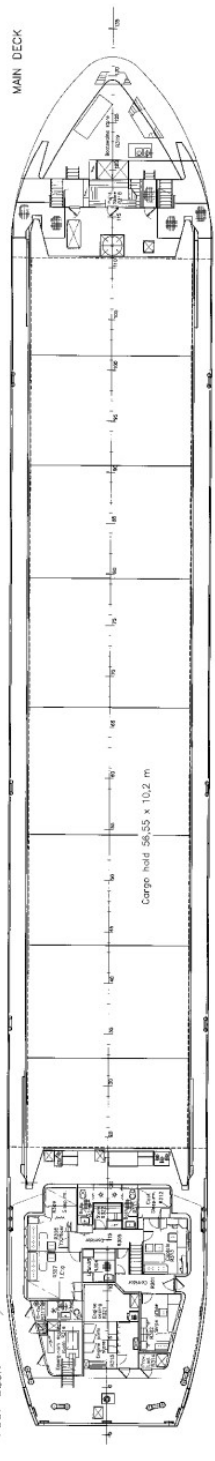
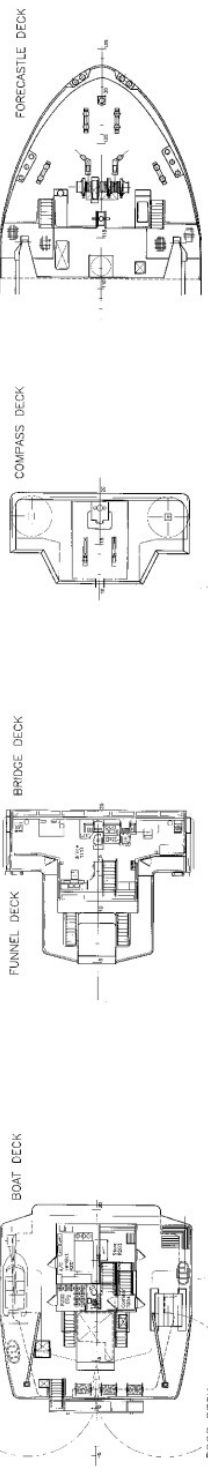
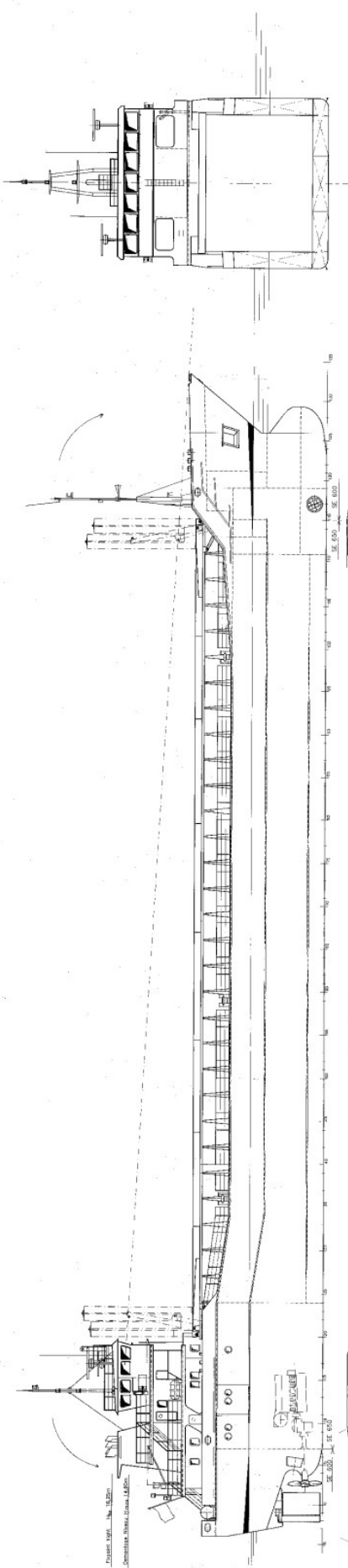
DIMENSIONS			
Length over all	88.00 m	Cargo hold dimension	56,55 x 10,20 x 8,15 m
Length between perp.	81,41 m	Hatch Cover Type	Kvaerner Multi-fold Crocodile
Breadth moulded	12,80 m	Box opening hatch	56,55 m
		Box opening hatch bulkheads in storage position	55,65 m
Depth (moulded)	7,10 m	Hatch Dimensions (L x B)	1 hatch, 56,55 x 10,20m
SWL Tanktop	15,00 t/m ²	Hold capacity grain	4.613 cbm / 162906 cbft
SWL Hatch cover	1,6 t/m ²	Hold capacity bale	4.560 cbm / 161034 cbft
Distance from waterline to top of hatch coaming in full ballast condition	6,05 m	Containers TEU (hold/hatch)	108/*36

TECHNICAL SPECIFICATIONS	
Main Engine	MAK 8M20, 1520 kW
Bow thruster	1 x 185 kW
Fuel	MGO
Electrical Ventilation	Fitted
IMO Fitted	Yes / various classes

TANK CAPACITY	
Ballast Water	1652 cubm
Gas oil	122 mts
Fresh Water	48 mts


Boeckmans
chartering@boeckmans.be

All details given in good faith and believed to be correct, but without guarantee



CARGO MOTOR SHIP
2461 GT

MAIN DIMENSIONS

Length over all	87.20 m
Length below deck	81.00 m
Breadth mid.	12.80 m
Depth to main deck	7.10 m
Depth to poop deck	6.00 m
Draught max. in sea water	5.49 m
Draught in ballast	D ₁ =2.80 m
Height from the base line	D ₂ =3.69 m
Base engine output	1520 kW at 1000 rpm
Base engine conditions	1500 kW at 117 km/h
Decalage on draught	D=3.84 m
Decalage on draught	3870 ton
Cargo hold capacity	4658 m ³

CLASS: **CL 100 AS "E" "G" MC AUT "E"**
 Equipped for carriage of dangerous goods

SLOVENSKE LOKALNE KOPANKE D.D. 837 00 BRATISLAVA

Proj. No.	1333000	Proj. Name	BRATISLAVA
Proj. Date	13.10.2004	Proj. No.	1333000
Proj. No.	1333000	Proj. Name	BRATISLAVA
Proj. Date	13.10.2004	Proj. No.	1333000

Author: **BRATISLAVA**
 Designer: **BRATISLAVA**
 Check: **BRATISLAVA**
 Scale: **BRATISLAVA**
 Date: **BRATISLAVA**